

Outstanding Care,
Compassionate People,
Healthier Communities

National Staff Survey 2024

Best NHS Acute Trust in the East Midlands...

... to work for, as voted
for by our staff for the
7th year running

...for staff morale

...for staff engagement

...for patients receiving
standard of care staff
would want for family
and friends

We remain a high-
performing Trust across
the whole Midlands

CONTACT US >> If you have any queries please contact:
sfh-tr.odenquiries@nhs.net

NHS

Sherwood Forest Hospitals
NHS Foundation Trust



Your
**VOICE
MATTERS**

STAFF ENGAGEMENT 2023/24

Our 2024 Staff Survey Results

As a Trust

3,568 of you had your say in this year's survey – that's more than at any point in our history

WE ARE COMPASSIONATE & INCLUSIVE



OUR SCORE

7.52

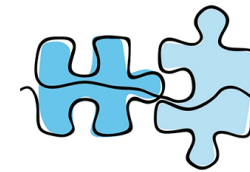
WE ARE SAFE & HEALTHY



OUR SCORE

6.31

WE ARE A TEAM



OUR SCORE

6.98

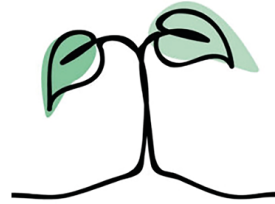
WE ARE RECOGNISED & REWARDED



OUR SCORE

6.15

WE ARE ALWAYS LEARNING



OUR SCORE

6.03

STAFF ENGAGEMENT



OUR SCORE

7.13

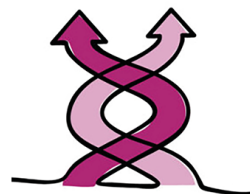
WE EACH HAVE A VOICE THAT COUNTS



OUR SCORE

6.98

WE WORK FLEXIBLY



OUR SCORE

6.47

STAFF MORALE



OUR SCORE

6.31