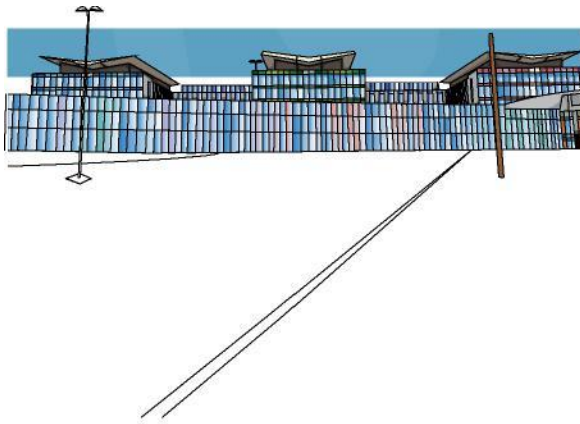


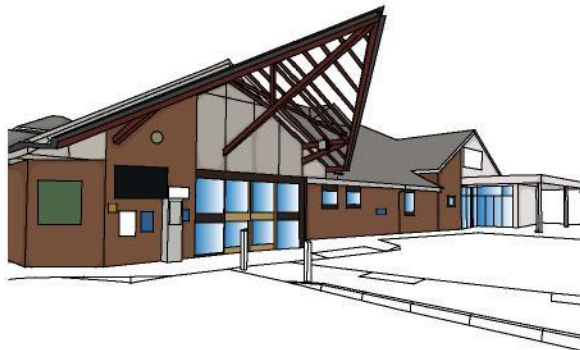
How to Contact Us



King's Mill Hospital
Reception opening hours:
Monday to Friday
0830-1630
Mansfield Road
Sutton in Ashfield
Notts
NG17 4JL
01623 622515 ext 3780/1
[Email: sfh-tr.occupational.health@nhs.net](mailto:sfh-tr.occupational.health@nhs.net)



Newark Hospital
OH clinics are held on Monday
afternoons in:
Eastwood Centre,
Newark Hospital
Boundary Road
Newark
Notts
NG24 4DE



Appointments at Newark can be arranged by contacting King's Mill Occupational Health Department on 01623 622525 Ext 3780/1 or [email: sfh-tr.occupational.health@nhs.net](mailto:sfh-tr.occupational.health@nhs.net)

Occupational Health Here to Help



Healthier Communities,
Outstanding Care

Occupational Health Service

Here to Help

A large amount of our life is spent at work. Occupational Health provides an independent service which helps make sure that your health is not adversely affected by the work you do, and to help you with any health problems that are affecting you at work

We do this by offering the following services:

- We provide a one to one confidential self referral listening service with an Occupational Health Nurse, with onward sign posting to other relevant services
- We provide one to one Manager referral consultations with an Occupational Health Nurse or Doctor
- We provide vaccinations against occupational infections to appropriate staff—including Hepatitis B, Varicella, MMR, TB screening and Influenza (October—February every year)
- We undertake work health assessments for front line patient facing staff
- We provide expert advice, support and post exposure follow up for staff who sustain needlestick or 'sharps' injuries
- We have Physiotherapy services for staff offering advice on: Self-management, musculoskeletal health and wellbeing and how to self-refer to musculoskeletal physiotherapy services at work and closer to home.

- We advise Managers on the re-deployment and rehabilitation of staff, including advice on any reasonable adjustments or adaptations to posts that may be considered in compliance with the Equality Act 2010
- We are involved in the screening and contact tracing of staff following outbreaks of infection in the workplace (in conjunction with the Infection Prevention & Control Team)
- We assist Managers in the identification of 'at risk' groups of staff and provide appropriate health surveillance where required



If any aspects of your health concern you in relation to your work, then come and talk to us.



Our Occupational Health staff have extensive knowledge and experience of working with individuals and Managers to offer support and advice on work related health issues. We are here to help.

Our nursing staff are all qualified Registered Nurses, some with specialist Occupational Health qualifications. Our medical staff are Consultant Occupational Health Physicians.