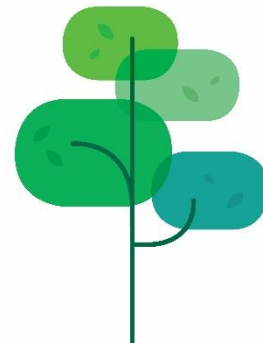


# Programme Assurance Report

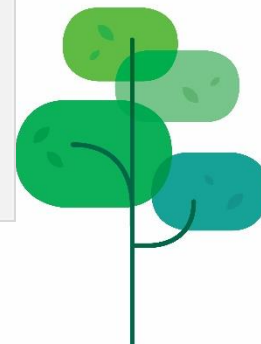
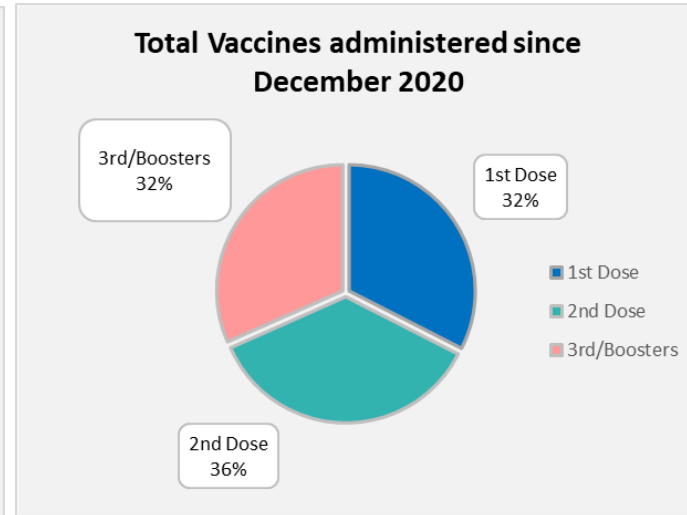
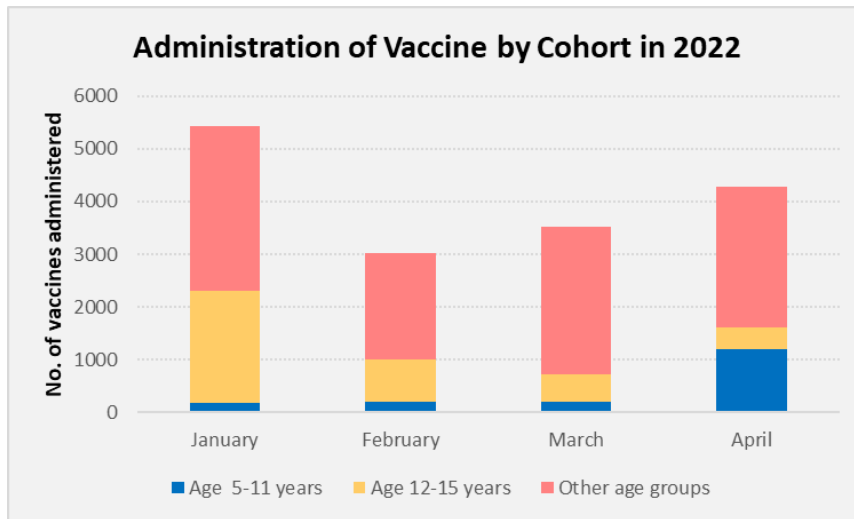
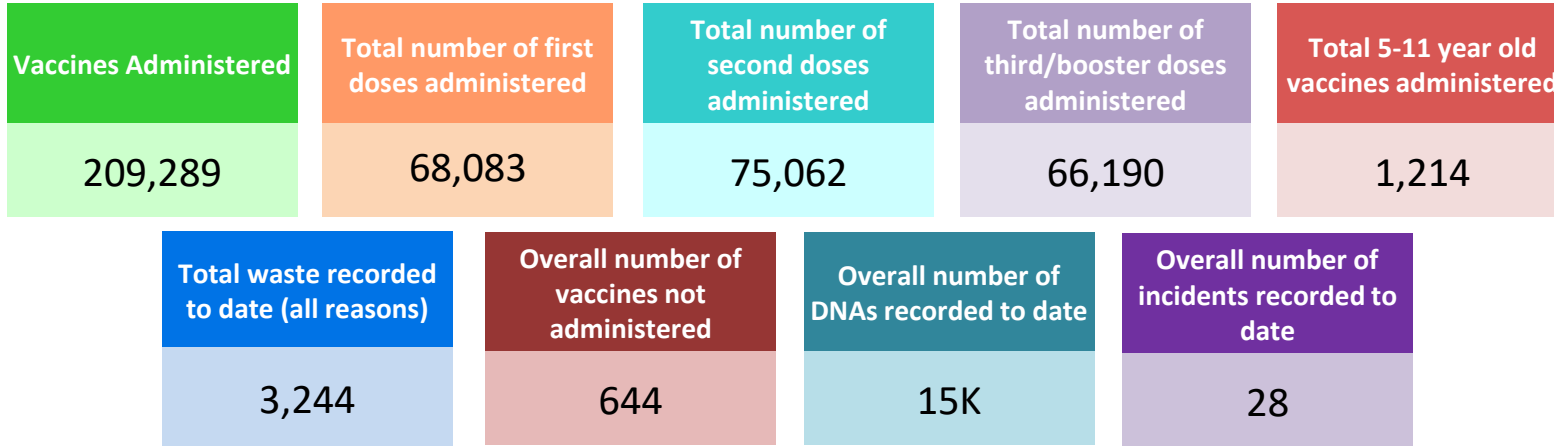
## April 2022

### COVID 19 Vaccination Programme Sherwood Forest Hospital Hub



# Performance to date

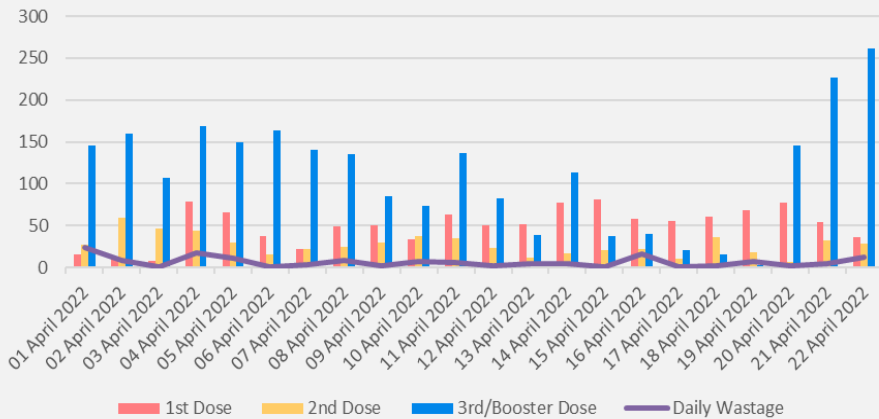
(8<sup>th</sup> December 2020 – 22<sup>nd</sup> April 2022)



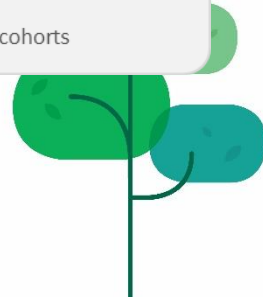
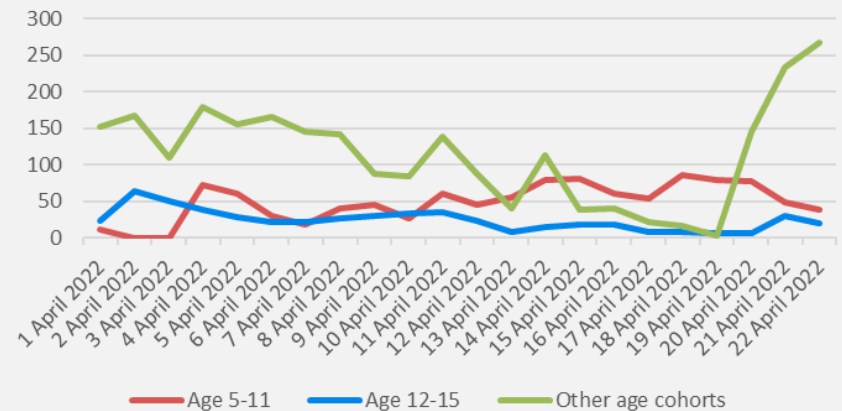
# Monthly performance (April 2022)

<b>Total Vaccines Administered to date</b>	<b>Vaccines Administered this month</b>	<b>Overall number of vaccines not given this month</b>	<b>DNAs recorded during this month</b>	<b>Total waste recorded this month</b>
209,289	4,149	5	395	143

Daily Vaccinations by Dose - April 2022



Daily Vaccinations - April 2022



# KMH Hub Relocation Update

- KMH Hub relocated on 21<sup>st</sup> April 2022 from the Education Centre to TB3.
- A number of temporary fittings and fixtures are currently in place due to be completed in early May 2022.
- IPC visit completed and compliance confirmed
- Pharmacy Assurance visit completed and compliance met with assurance provided to regional programme
- All support services have been redirected to new location
- Internal and external communications to confirm relocation taken place, with adjustments to signs throughout KMH site. Social Media updates have been shared with map of KMH with previous hub location and new hub location
- Transfer of IT, telecommunications and signage has been completed to support relocation.

Assessment Area



Vaccination Area



Vaccination/Recovery Area

