

## E04 ERCP

Expires end of April 2024

You can get information locally from the Trust's website at [www.sfh-tr.nhs.uk](http://www.sfh-tr.nhs.uk)

If you need this information in a different language or format, please contact the Trust's Patient Experience Team (PETs) on:

- King's Mill Hospital on 01623 672 222
- Newark Hospital on 01636 685 692
- Email on [sfh-tr.pet@nhs.net](mailto:sfh-tr.pet@nhs.net)

You can also contact:

---

---

---

You can get more information from [www.aboutmyhealth.org](http://www.aboutmyhealth.org)

Tell us how useful you found this document at [www.patientfeedback.org](http://www.patientfeedback.org)



Royal College  
of Surgeons  
of England



THE ROYAL  
COLLEGE OF  
SURGEONS  
OF EDINBURGH

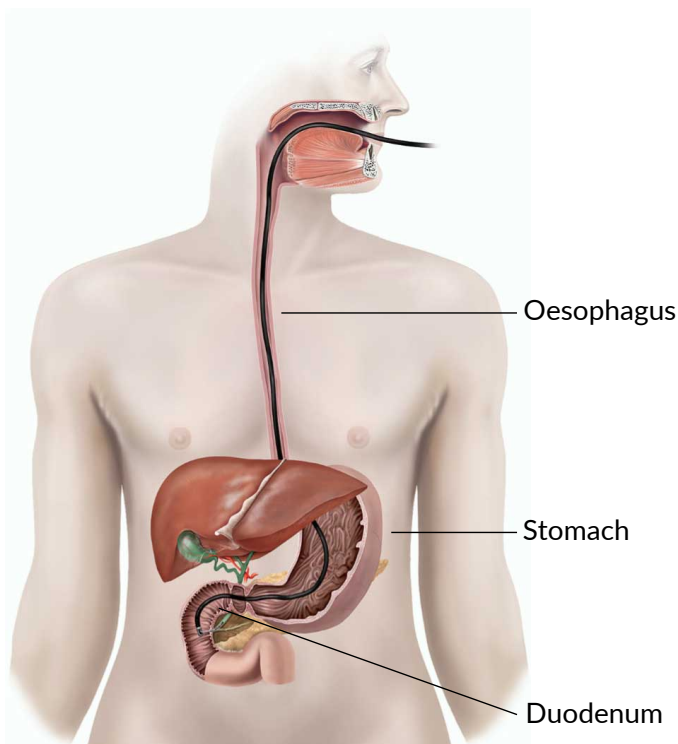


## What is an ERCP?

An ERCP (endoscopic retrograde cholangio-pancreatogram) is a procedure to look for any problems in your bile duct or pancreatic duct using a flexible telescope.

Your doctor has suggested an ERCP. However, it is your decision to go ahead with the procedure or not.

This document will give you information about the benefits and risks to help you to make an informed decision. If you have any questions that this document does not answer, it is important that you ask your doctor or the healthcare team. Once all your questions have been answered and you feel ready to go ahead with the procedure, you will be asked to sign the informed consent form. This is the final step in the decision-making process. However, you can still change your mind at any point.



An ERCP

## What are the benefits of an ERCP?

Your doctor is concerned that you may have a problem in your bile duct or pancreatic duct. Gallstones in your bile duct or a narrowing of your bile duct are common problems, both of which can cause jaundice (your eyes and skin turning

yellow). If the endoscopist (the person doing the ERCP) finds a problem, they may be able to treat it during the procedure.

## Are there any alternatives to an ERCP?

There are other ways of looking at your bile duct such as a scan called an MRCP, or a technique called endoscopic ultrasound. These other investigations have fewer complications but cannot be used to treat a problem, which an ERCP is often able to do. You may already have had one of these tests.

If you have a problem in your bile duct, an operation may be an alternative to an ERCP.

## What will happen if I decide not to have an ERCP?

Your doctor may not be able to confirm what the problem is.

If you decide not to have an ERCP, you should discuss this carefully with your doctor.

## What does the procedure involve?

### Before the procedure

If you are female, the healthcare team may ask you to have a pregnancy test as some procedures involve x-rays or medications that can be harmful to unborn babies. Sometimes the test does not show an early-stage pregnancy so let the healthcare team know if you could be pregnant.

If you take warfarin, clopidogrel or other blood-thinning medication, let the endoscopist know at least 7 days before the procedure.

If you have diabetes and take medication containing metformin, let the healthcare team know as soon as possible. You may need to stop taking it on the day of the procedure and for the next 2 days. You may need to have a blood test after the procedure before continuing with your medication.

Do not eat anything in the 6 hours before your appointment, and only drink small sips of water. This is to make sure your stomach is empty so the endoscopist can have a clear view of your stomach. It will also make the procedure more

comfortable. You can continue to drink small sips of water up to 2 hours before the procedure. If you have diabetes, you will need special advice depending on the treatment you receive for your diabetes.

The procedure may involve injecting you with medication (Buscopan) to relax your stomach and make the procedure more comfortable. Buscopan can affect the pressure in your eyes, so let your doctor know if you have glaucoma.

The healthcare team will carry out a number of checks to make sure you have the procedure you came in for. You can help by confirming to the endoscopist and the healthcare team your name and the procedure you are having.

The healthcare team will ask you to sign the consent form once you have read this document and they have answered your questions.

You may be given antibiotics through a small needle in your arm or the back of your hand.

### In the endoscopy room

An ERCP usually takes 30 to 45 minutes.

The endoscopist may offer you a sedative or painkiller to help you to relax. They will give it to you through a small needle in your arm or the back of your hand. You will be able to ask and answer questions but you will feel relaxed. You may not be aware of or remember the procedure. The healthcare team can give you more information about this.

Many endoscopists perform the procedure with you asleep under a general anaesthetic, which they can give you through the small needle, or as a mixture of anaesthetic gas that you breathe through a mask or mouthpiece. This means you will be unaware of the procedure. The healthcare team can give you more information about this.

Once you have removed any false teeth or plates, they may spray your throat with some local anaesthetic and ask you to swallow it. This can taste unpleasant.

The endoscopist will ask you to lie face down or on your left side and will place a plastic mouthpiece in your mouth.

The healthcare team will monitor your oxygen levels and heart rate using a finger or toe clip. If

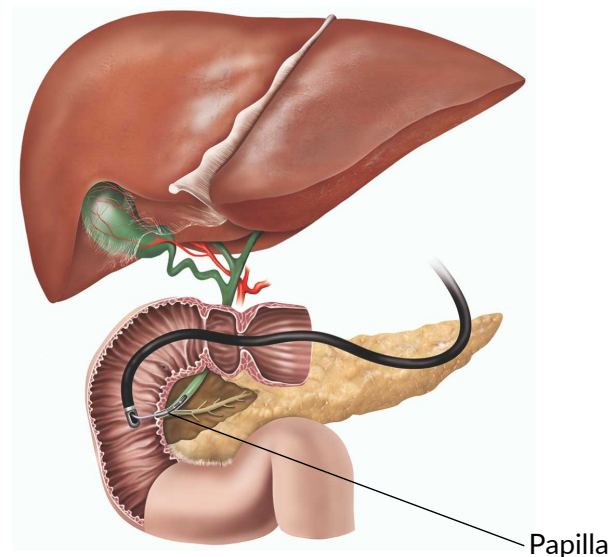
you need oxygen, they will give it to you through a mask or small tube under your nostrils.

If you are awake during the procedure and at any time you want it to stop, let the endoscopist know. The endoscopist will end the procedure as soon as it is safe to do so.

The endoscopist will place a flexible telescope (endoscope) into the back of your throat. You may be asked to swallow when the endoscope is in your throat. This will help the endoscope to pass easily into your oesophagus (gullet) and down into your stomach. From here the endoscope will pass into your duodenum.

The endoscope is then positioned to look at the papilla. The papilla is a small circle of muscle that controls what goes through it.

A fine tube is inserted through the endoscope and into your bile duct or pancreatic duct through the papilla.



A tube inserted through the papilla

Dye (colourless contrast fluid) is injected into the ducts and x-rays are taken that show the ducts.

If there are gallstones in your bile duct, they can usually be removed using a sphincterotomy (a cut in the papilla). If the gallstones are large, the endoscopist can insert a stent (tube) in your bile duct to help relieve jaundice. This can also relieve jaundice caused by a narrowing of your bile duct. The endoscopist can carry out these steps using

the endoscope and you will not need an operation involving a larger cut.

## What complications can happen?

The healthcare team will try to reduce the risk of complications.

Any numbers which relate to risk are from studies of people who have had this procedure. Your doctor may be able to tell you if the risk of a complication is higher or lower for you.

Some complications can be serious and can even cause death (risk: 4 in 1,000).

You should ask your doctor if there is anything you do not understand.

The possible complications of an ERCP are listed below.

- Blurred vision, if you are given a Buscopan injection. This usually gets better after about an hour. Sometimes the injection can also affect the pressure inside your eye. This is more likely if you have a rare type of glaucoma. If your eye becomes red and painful, and your vision becomes blurred, let your doctor know straight away.
- Allergic reaction to the equipment, materials, medication or dye. This usually causes a skin rash which settles with time. Sometimes the reaction can be serious (risk: less than 1 in 2,500) or even life-threatening (risk: 1 in 25,000). The healthcare team is trained to detect and treat any reactions that might happen. Let the endoscopist know if you have any allergies or if you have reacted to any medication or tests in the past.
- Damage to teeth or bridgework. A plastic mouthpiece will be placed in your mouth to help protect your teeth. Let the endoscopist know if you have any loose teeth.
- Breathing difficulties or heart irregularities, as a result of reacting to the sedative or inhaling secretions such as saliva. To help prevent this, your oxygen levels will be monitored and a suction device will be used to clear any secretions from your mouth.
- Heart attack (where part of the heart muscle dies) or stroke (loss of brain function resulting from an interruption of the blood supply to

your brain) can happen if you have serious medical problems. This is rare.

- Incomplete procedure caused by a technical difficulty, food or blockage in your upper digestive system, complications during the procedure, or discomfort. Your doctor may recommend another ERCP, a different test or an operation.
- Making a hole in your oesophagus, stomach or duodenum, particularly if a sphincterotomy is performed (risk: 1 in 200). You may need further treatment.
- Bleeding, which usually stops on its own (risk if you have a sphincterotomy: 3 in 100). You may need surgery if the bleeding continues.
- Infection. It is possible to get an infection from the equipment used, or if bacteria enter your blood. The equipment is disinfected so the risk is low but let the endoscopist know if you have a heart abnormality or a weak immune system. You may need treatment with antibiotics. Let your doctor know if you get a high temperature or feel unwell.
- Inflammation of your pancreas (pancreatitis), which causes abdominal pain and can make you feel sick (risk: 1 in 10). The risk of pancreatitis can be reduced by half by giving you a rectal suppository medication. This medication (diclofenac) is an anti-inflammatory and does not make you go to the toilet. Most cases of pancreatitis are mild and settle within a few days.
- Infection within your bile ducts (cholangitis) (risk: less than 1 in 100). You will usually be given further antibiotics to reduce the risk of a serious infection.

## How soon will I recover?

### In hospital

After the procedure you will be transferred to the recovery area where you can rest.

If you were given a sedative, you will usually recover in about an hour but this depends on how much sedative you were given. Once you are awake enough and able to swallow properly you will be given a drink. You may feel a bit bloated for a few hours but this will pass.

You may be able to go home the same day. However, your doctor may recommend that you stay a little longer.

## Returning to normal activities

If you had sedation and you do go home the same day:

- a responsible adult should take you home in a car or taxi and stay with you for at least 24 hours;
- you should be near a telephone in case of an emergency;
- do not drive, operate machinery or do any potentially dangerous activities (this includes cooking) for at least 24 hours and not until you have fully recovered feeling, movement and co-ordination; and
- do not sign legal documents or drink alcohol for at least 24 hours.

You should be able to return to work after about 2 days unless you are told otherwise.

You may get some abdominal pain over the next 1 to 2 days. If this becomes worse and you start to vomit, you develop fever and chills, your jaundice gets worse, you start to feel weak and breathless, or your bowel movements turn black, contact the endoscopy unit or your GP. In an emergency, call an ambulance or go immediately to your nearest Emergency department.

## Lifestyle changes

If you smoke, stopping smoking will improve your long-term health.

Try to maintain a healthy weight. You have a higher risk of developing complications if you are overweight.

Regular exercise should improve your long-term health. Before you start exercising, ask the healthcare team or your GP for advice.

## The future

The healthcare team will tell you what was found during the ERCP and discuss with you any treatment or follow-up you need. If your treatment is for jaundice, it usually takes several days for the jaundice to settle.

## Summary

An ERCP is usually a safe and effective way of finding out if there is a problem with your bile duct or pancreatic duct and treating your symptoms. However, complications can happen. You need to know about them to help you to make an informed decision about the procedure. Knowing about them will also help to detect and treat any problems early.

Keep this information document. Use it to help you if you need to talk to the healthcare team.

Some information, such as risk and complication statistics, is taken from global studies and/or databases. Please ask your surgeon or doctor for more information about the risks that are specific to you, and they may be able to tell you about any other suitable treatments options.

This document is intended for information purposes only and should not replace advice that your relevant healthcare team would give you.

## Acknowledgements

### Reviewer

Ian Beckingham (DM, FRCS)

### Illustrator

Medical Illustration Copyright ©  
Medical-Artist.com