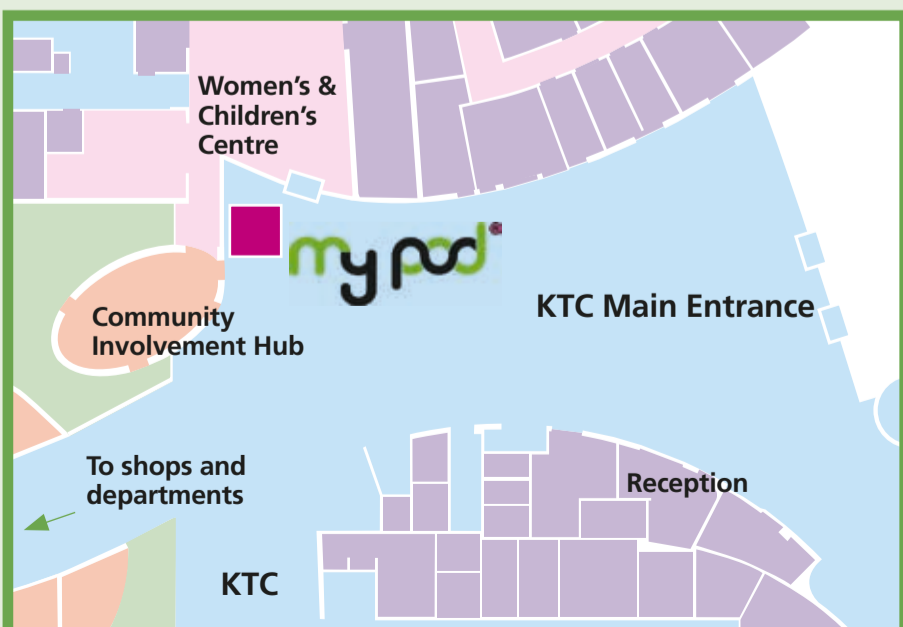
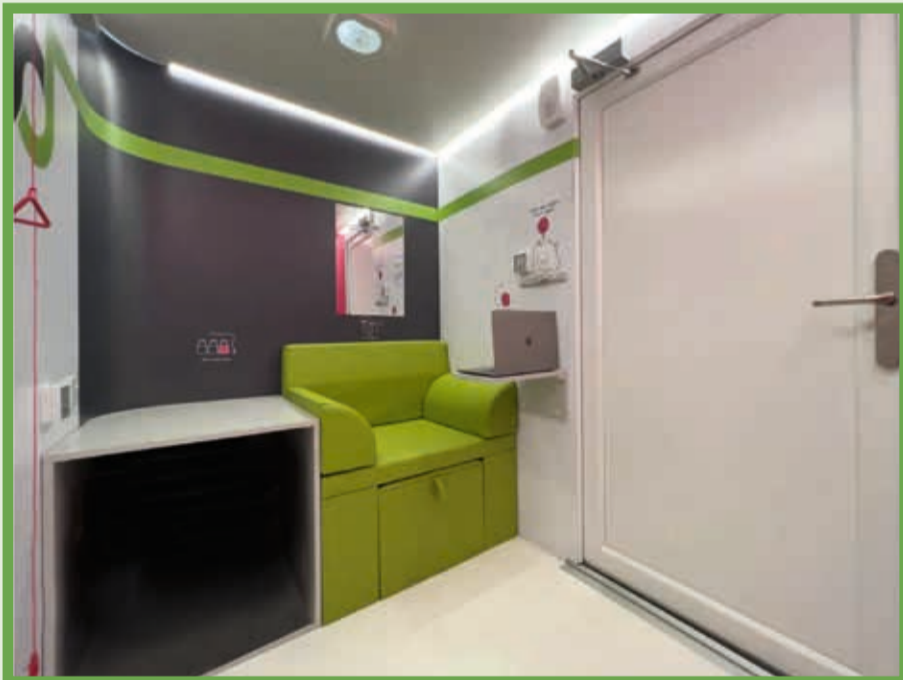




Attention Parents!

Have you seen our dedicated pod for breastfeeding, chestfeeding and expressing?



Legally, you can breastfeed / chestfeed your baby or child anywhere in public, but this pod has been provided for those who need a quiet, private space to feed or express.

The pod offers the following benefits:

- No 'app' needed to access the pod, just open the door, go inside and lock the door behind you
- Accessible to both staff and visitors
- Comfortable seating with extendable footrest
- High-quality upholstery with hospital-grade, anti-microbial fabric
- Wipe-clean surfaces
- Wheelchair accessible
- Keyless access
- Dimmable lights

You can find the pod within the KTC main entrance, please see map opposite.

If you have any questions or concerns please contact the SFH helpdesk on 3005.