

# Board of Directors Scorecard (September 2015)

Performance – Mandatory Access Standards (Executive Lead – Sue Barnett, COO)

## Description

## Aggregate Position

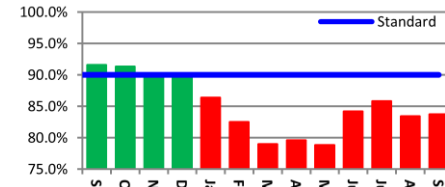
## Historical

## Variation

### RTT Admitted Pathways (D Travis)

Percentage of admitted pathways closed within 18 weeks. The 90% threshold is a Monitor standard.

September performance is 83.76%

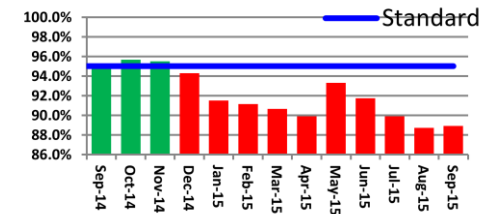


Non achieving specialties include General Surgery, T&O, Urology, Oral Surgery Neurology, Ophthalmology & Gastroenterology. Performance has slipped compared to the recovery trajectories.

### RTT Non-Admitted Pathways (D Travis)

Percentage of non-admitted pathways closed within 18 weeks. The 95% threshold is a Monitor standard.

September performance is 88.92%

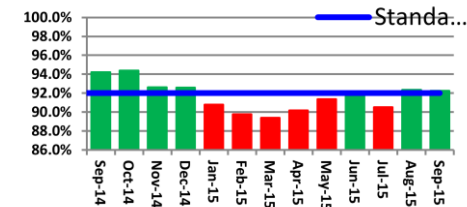


Non achieving specialties include Gen Surgery, Ophthalmology, Gynaecology, Oral Surgery, T&O, Respiratory Medicine, Gastroenterology, Urology, Cardiology & Neurology.

### RTT Incomplete Pathways (D Travis)

Percentage of incomplete pathways closed within 18 weeks. The 92% threshold is a Monitor standard.

September performance is 92.25%

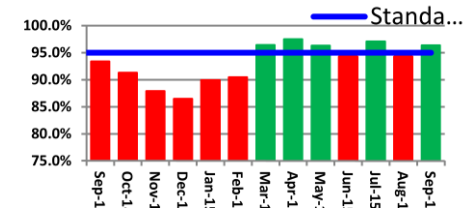


Non achieving specialties include General Surgery, Vascular Surgery, ENT, T&O, Plastic Surgery, Gastroenterology, Oral Surgery, Neurology and Pain Management.

### A&E 4 hour Standard (A Robinson)

Maximum waiting time of 4 hours in A&E from arrival to admission, transfer or discharge. The 95% threshold is a Monitor standard.

September performance is 96.4%



Performance in July has recovered in excess of the Monitor standards (in line with performance levels reported in March, April and May).