

Healthier Communities, Outstanding Care



Sherwood Forest Hospitals
NHS Foundation Trust

We are proud of our improvements over the last five years at Sherwood Forest Hospitals, and we recognise we can improve further. We know good quality healthcare can only be delivered by focussing on the experience of people, be it patients and the public or the colleagues you work with. Our improvements have been achieved by two central commitments to people:

- 1 We expect all patients to receive the same standard of care we would want our friends and family to have and**
- 2 We would like all colleagues to be treated with the same values we believe are important; support, kindness and respect.**

However, we know we can improve and we want to improve. We want to work with partners, we want to move beyond the boundaries of our hospitals and we want to help our local population become healthier. Over the next five years we will deliver **healthier communities and outstanding care for all.**

This strategy has come from the many conversations and listening events that have taken place over the last six months with more than 750 conversations with the public, SFH colleagues and partners. We hope you find this strategy as exciting as we do.



A partnership between everyone in our community...

We will...

- Provide outstanding care
- Promote and support health and wellbeing
- Maximise the potential of our workforce
- Continuously learn and improve
- Achieve better value

Signed:
#TeamSFH

The part you can play...

- Tell us when we get it right and when we get it wrong
- Be healthy and active
- Treat our staff and volunteers with respect
- Help us to learn from the care you experience
- Use our services wisely

Signed:

Our Values

C Communicating and working together

We will work as one compassionate and inclusive team, involving, informing and listening to all colleagues and local communities.

A Aspiring and improving

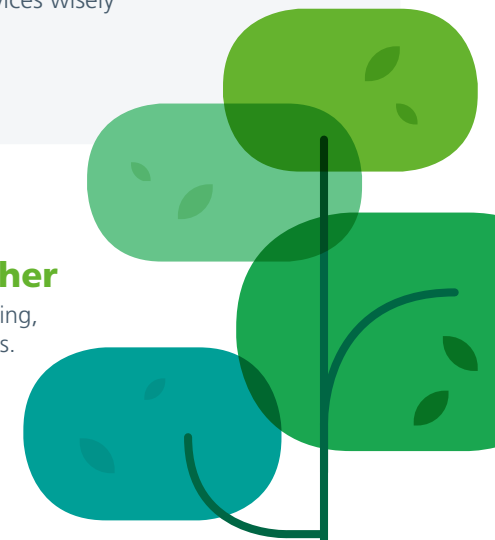
We will choose to work or be cared for by Sherwood as we focus on improving patient care and staff wellbeing.

R Respectful and caring

We will show kindness to all, embrace diversity and challenge inappropriate behaviours.

E Efficient and safe

We will be consistent and do the right thing at the right time, first time.



Overview

Strategic Objectives

Over the next five years we will...

Values

Vision:
Healthier
communities
and outstanding
care for all

To provide outstanding care

1. Give patients, carers and families a positive experience
2. Provide safer and clinically effective care
3. Improve coordination across health and social care

1

Communicating and working together

To promote and support health and wellbeing

1. Support people to have healthier lifestyles
2. Help to improve mental wellbeing including reducing loneliness
3. Work with partners to reduce health inequalities for those in greatest need

2

Aspiring and improving

To maximise the potential of our workforce

1. Attract and retain the right people
2. Have an engaged, motivated and high performing workforce
3. Develop and nurture our teams of colleagues and volunteers

3

Respectful and caring

To continuously learn and improve

1. Adopt evidence-based best practice
2. Make the best use of information and digital technology
3. Use research, innovation and improvement for the benefit of our communities

4

Efficient and safe

To achieve better value

1. Become financially sustainable
2. Work with our partners across Nottinghamshire to deliver efficiencies
3. Maximise the use of all our resources

Foundations:

Partnership: Working with health and social care partners, including primary care, patients, carers, the voluntary sector, the public and of course SFH colleagues

Culture: Embedding our values and behaviours and promoting an open and inclusive culture that embraces diversity