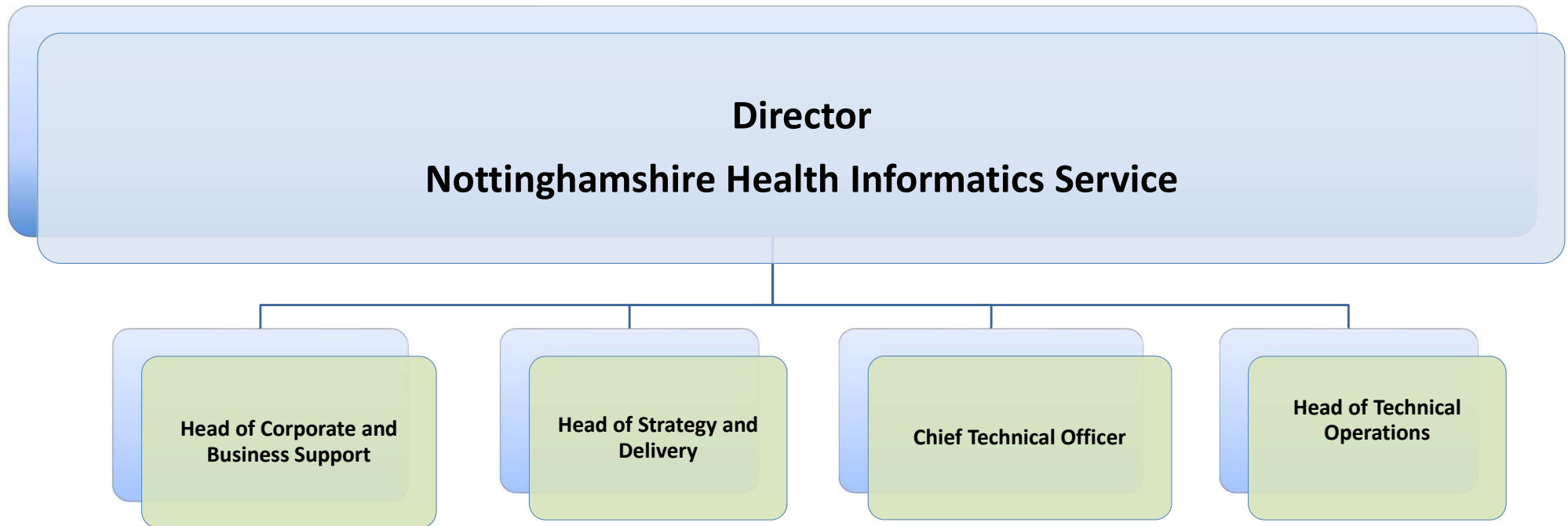




NHIS EXECUTIVE STRUCTURE



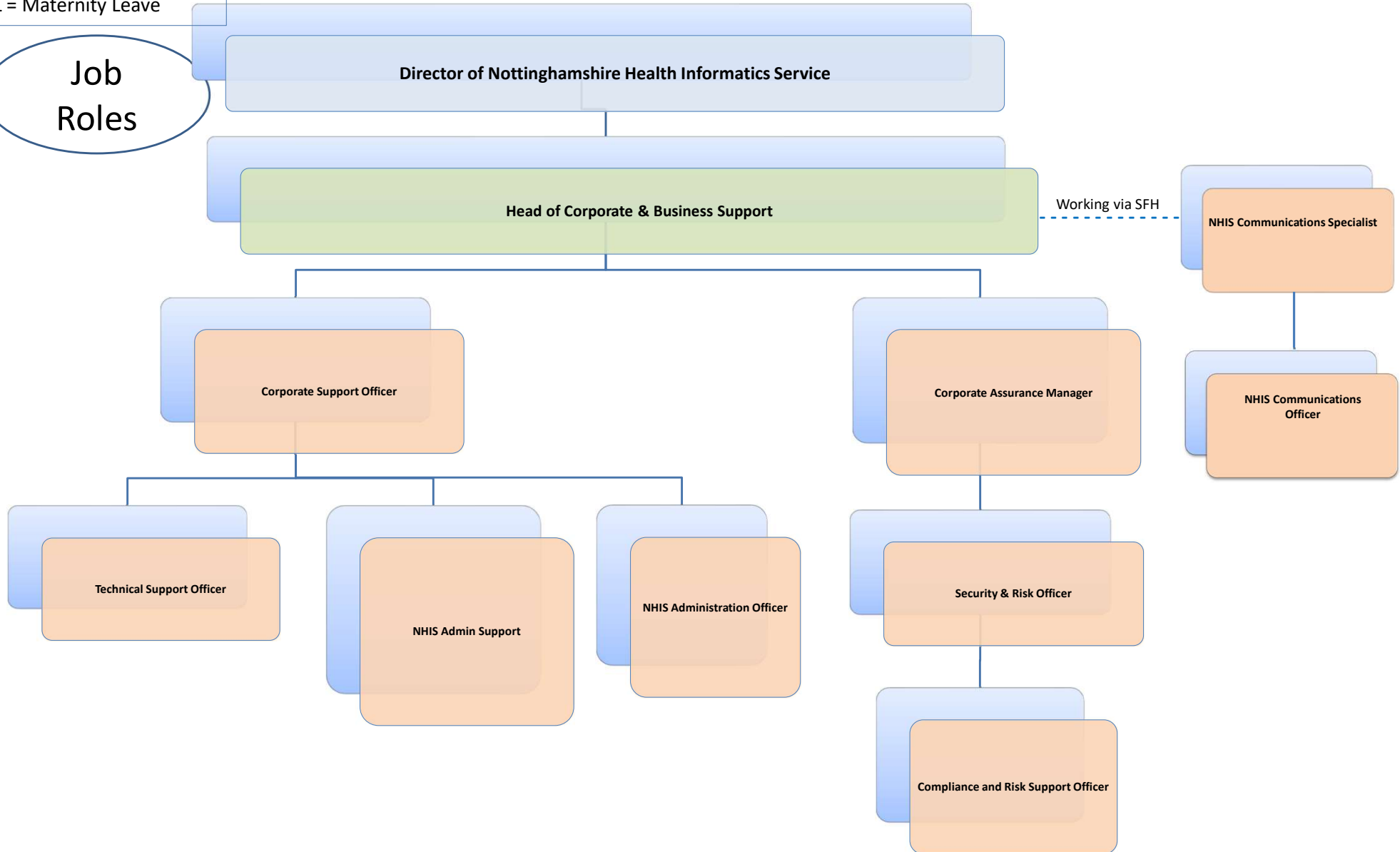
Key
A = Apprentice
I = Interim
S = Secondment
FT= Fixed Term
ML = Maternity Leave

Corporate & Business Support Strategic Business Unit (a)



**Nottinghamshire
Health Informatics Service**
Transforming care through technology

**Job
Roles**



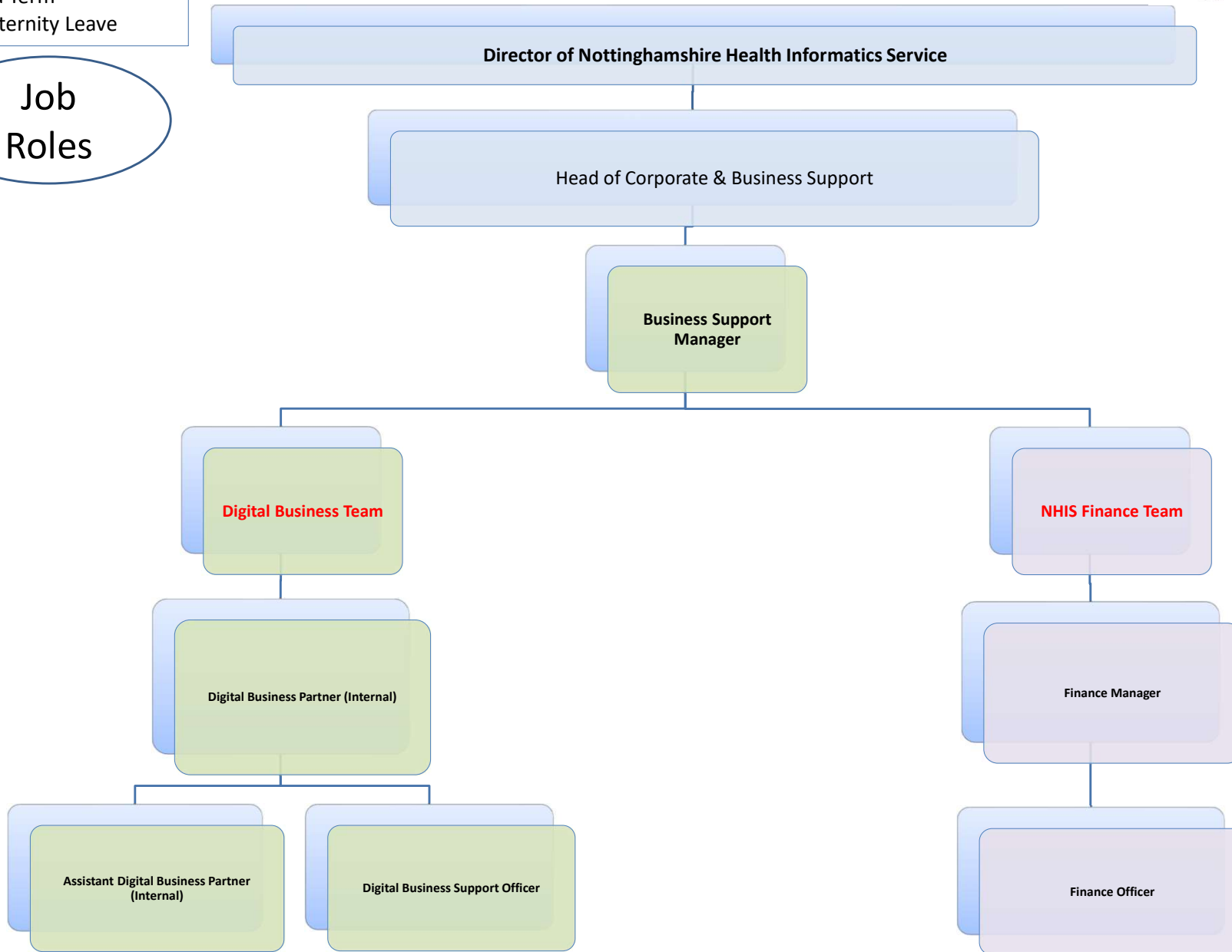
Key
A = Apprentice
I = Interim
S = Secondment
FT= Fixed Term
ML = Maternity Leave

Job Roles

Corporate & Business Support Strategic Business Unit (b)



Nottinghamshire Health Informatics Service
Transforming care through technology

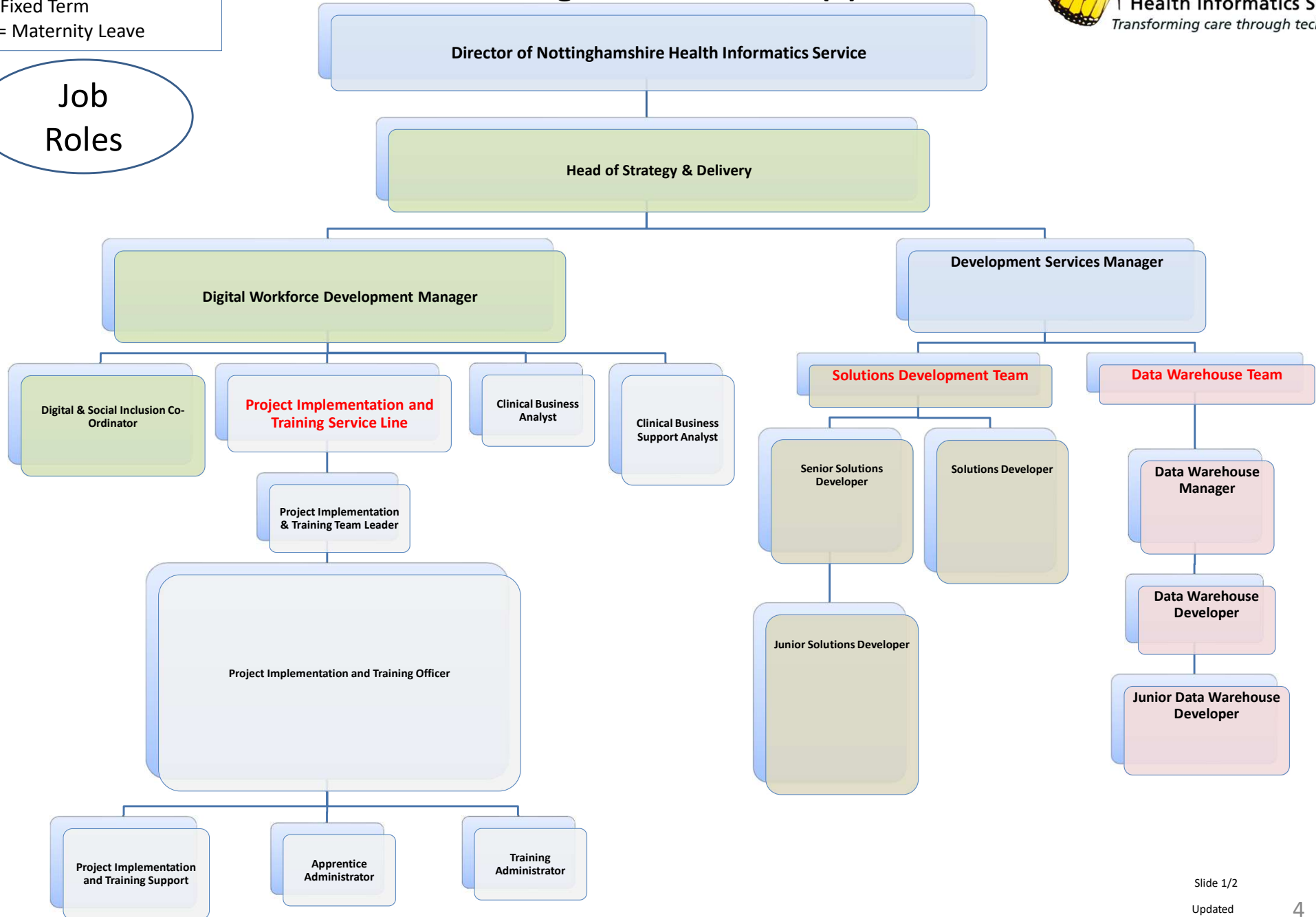


Key
 A = Apprentice
 I = Interim
 S = Secondment
 FT= Fixed Term
 ML = Maternity Leave



Strategy & Delivery Strategic Business Unit (a)

Job
 Roles

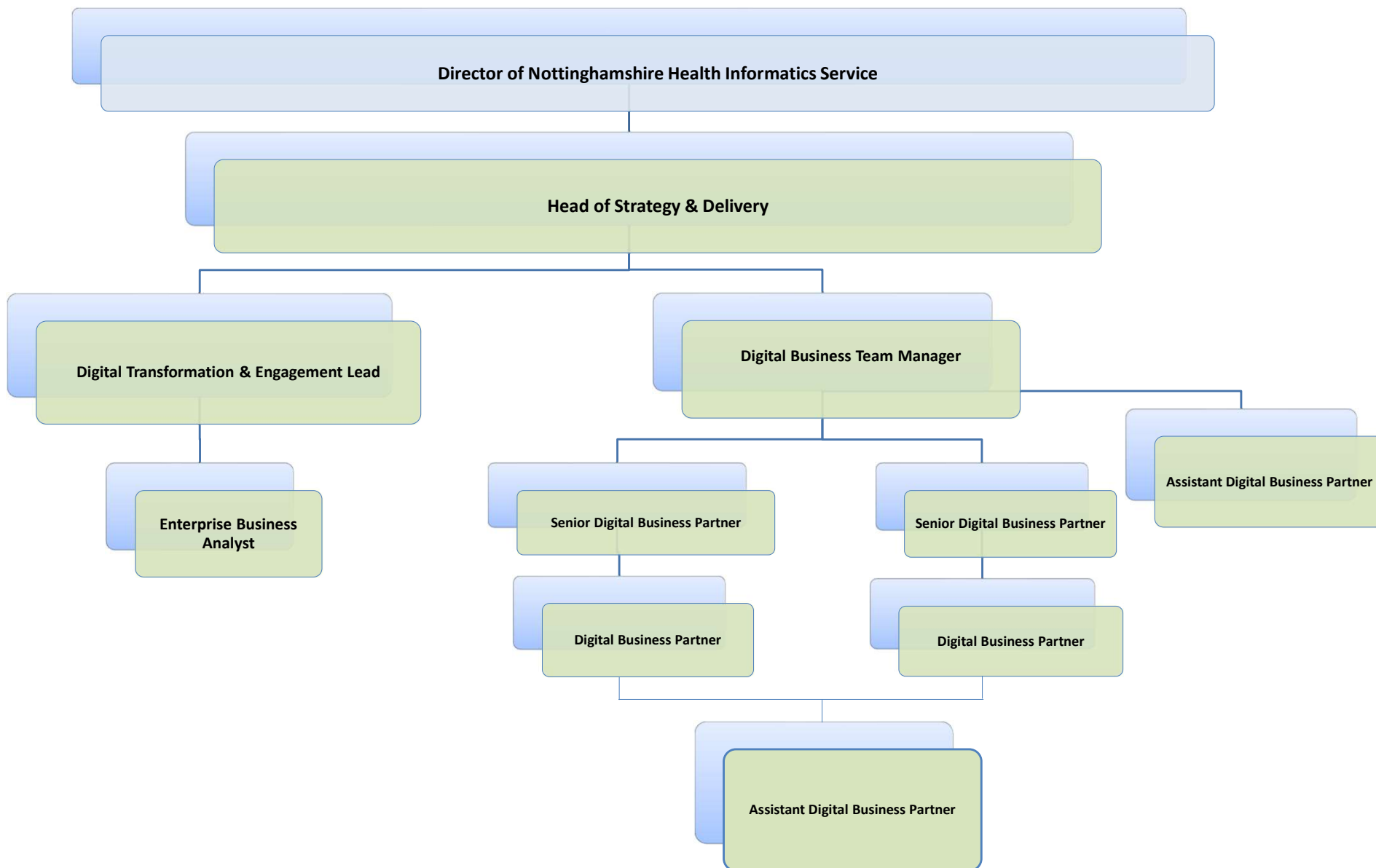


Key
A = Apprentice
I = Interim
S = Secondment
FT= Fixed Term
ML = Maternity Leave

Strategy & Delivery Strategic Business Unit Digital Business Team(b)

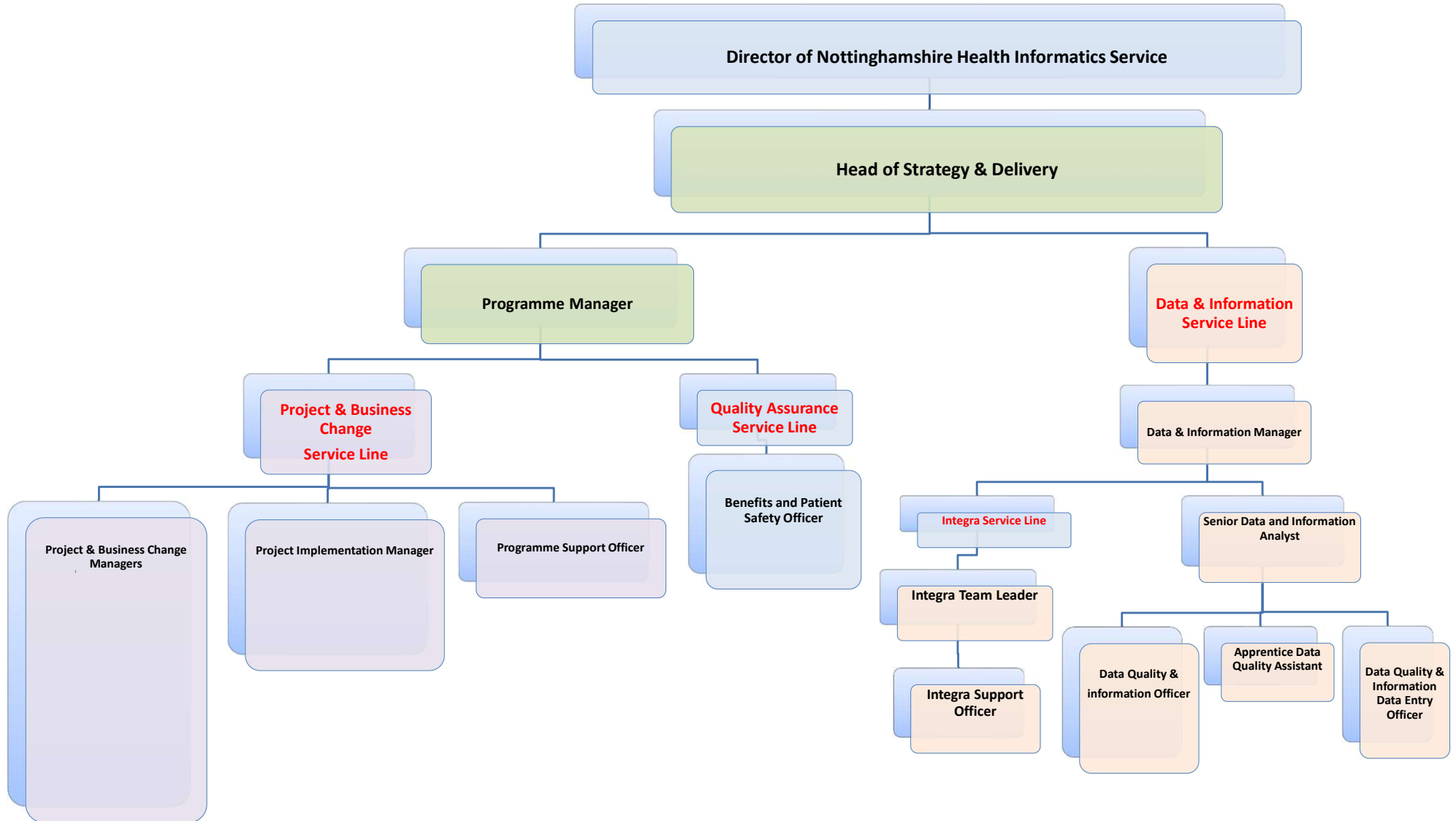


Nottinghamshire
Health Informatics Service
Transforming care through technology



Key
 A = Apprentice
 I = Interim
 S = Secondment
 FT= Fixed Term
 ML = Maternity Leave

Strategy & Delivery Strategic Business Unit (c)



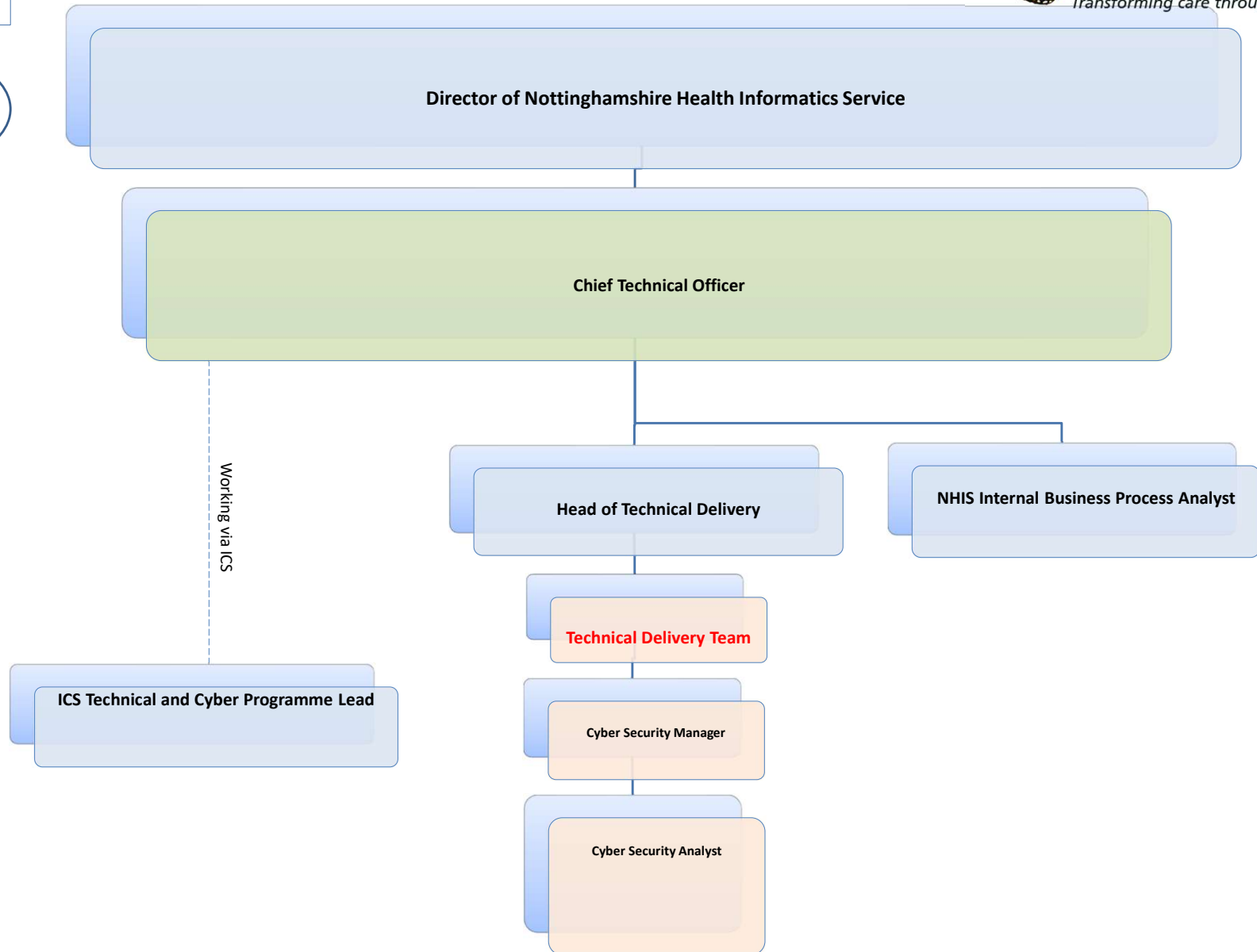
Key
A = Apprentice
I = Interim
S = Secondment
FT= Fixed Term
ML = Maternity Leave

Job Roles

Enterprise Architecture Strategic Business Unit



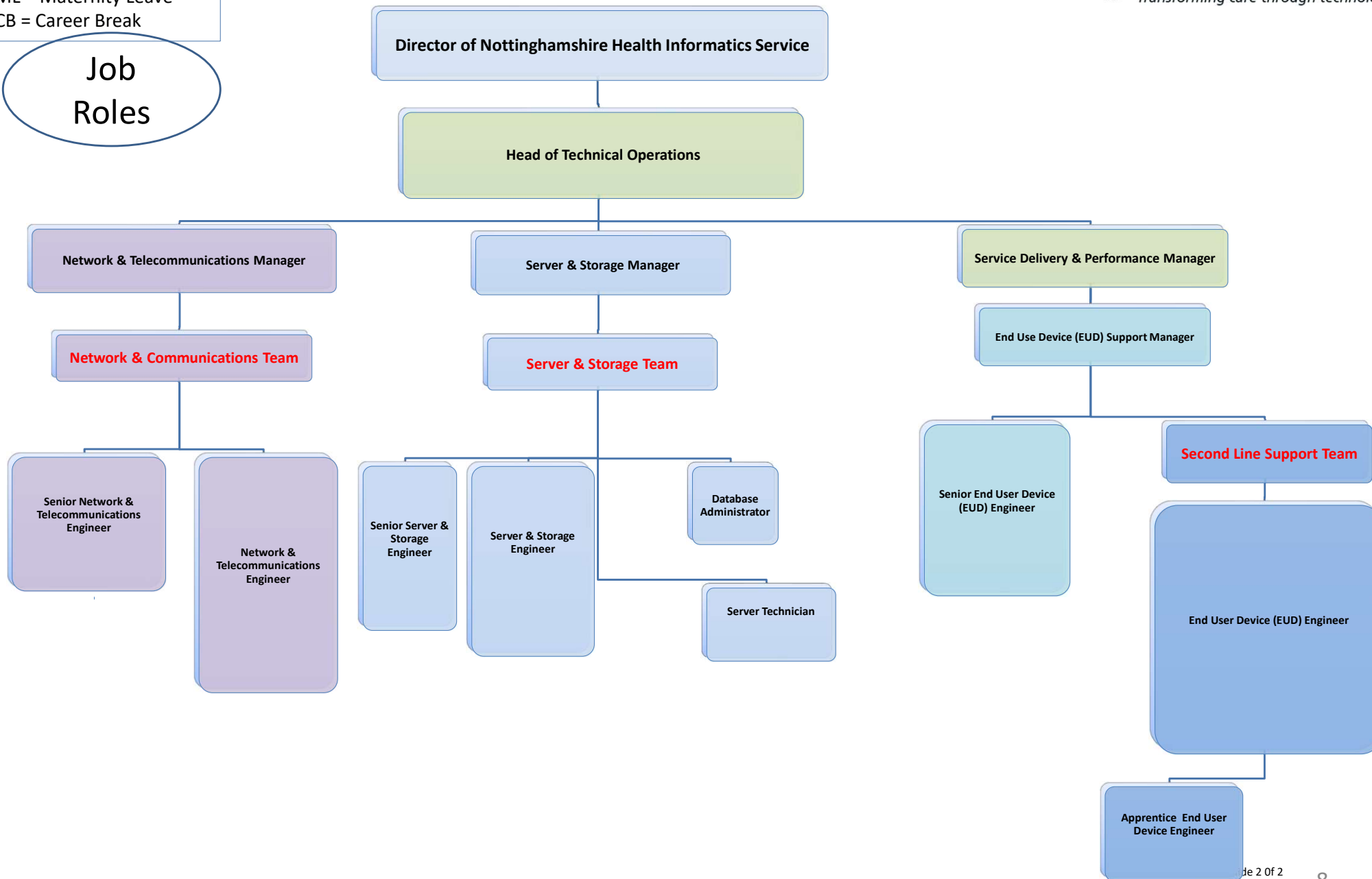
Nottinghamshire Health Informatics Service
Transforming care through technology



Key
 A = Apprentice
 I = Interim
 S = Secondment
 FT= Fixed Term
 ML = Maternity Leave
 CB = Career Break

Job Roles

Technical Operations Strategic Business Unit (a)



Key
 A = Apprentice
 I = Interim
 S = Secondment
 FT= Fixed Term
 ML = Maternity Leave
 CB = Career Break

Job Roles

Technical Operations Strategic Business Unit (b)

