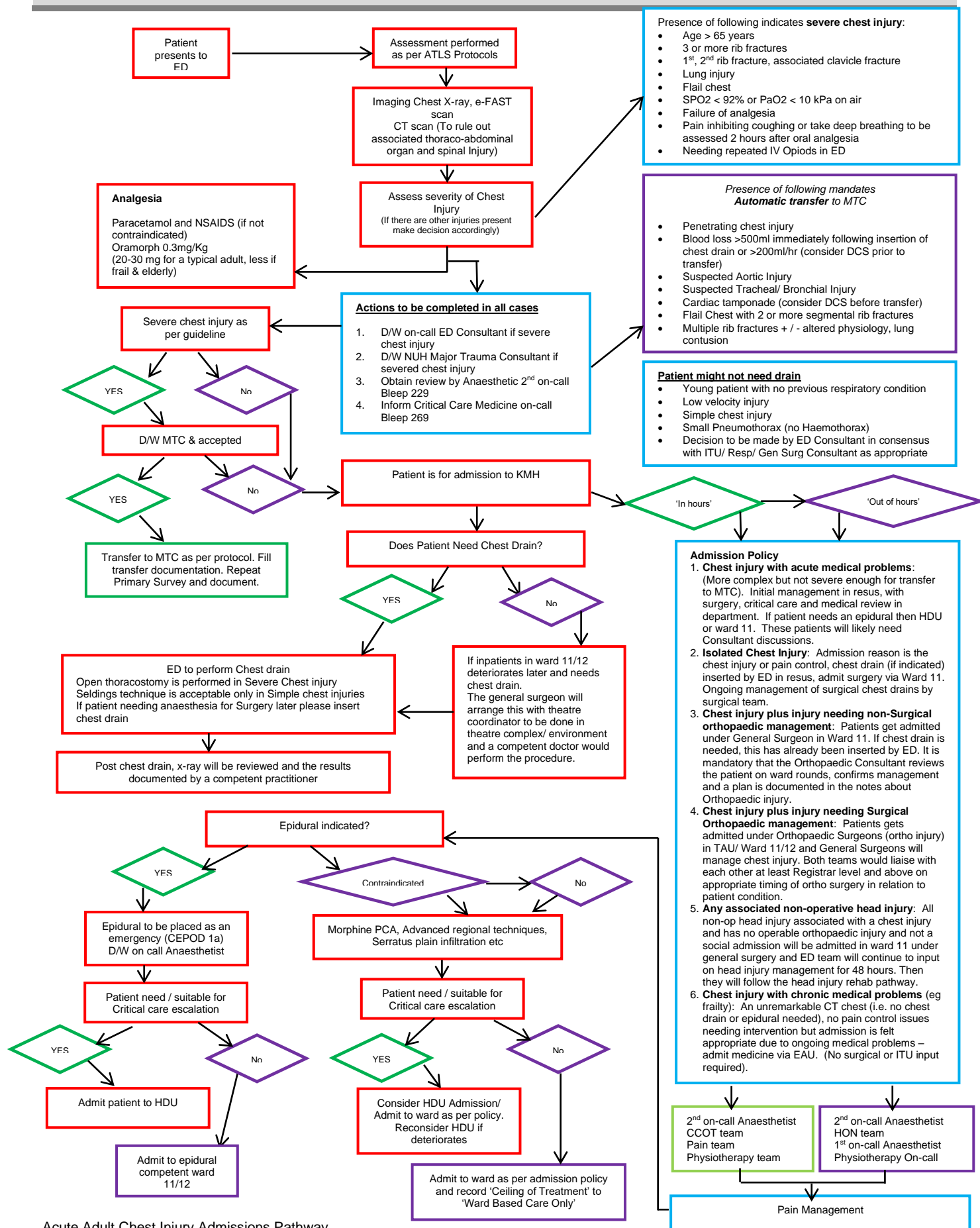


TITLE: ACUTE ADULT CHEST INJURY ADMISSIONS PATHWAY

Emergency Department, Acute Medicine, General Surgery, Orthopaedics, Critical Care, Pain Team, Physiotherapy, Respiratory



TITLE: ACUTE ADULT CHEST INJURY ADMISSIONS PATHWAY

Emergency Department, Acute Medicine, General Surgery, Orthopaedics, Critical Care, Pain Team, Physiotherapy, Respiratory

Document Category:	CLINICAL		
Document Type:	PATHWAY		
Keywords:	Severe; trauma; risk stratification; analgesia guideline; management;		
Version:	Issue Date:	Review Date:	
v3.0	30 th November 2022	July 2025	
Supersedes:	v2.1, Issued 13 th November 2019 to Review Date Sept 2022 (ext ³)		
Approved by (committee/group):	Surgery Divisional CG Group Meeting	Date Approved:	14 th Oct 2022
Scope/ Target Audience: (delete as applicable / describe)	Trust wide <ul style="list-style-type: none">Emergency Department, Acute Medicine, General Surgery, Orthopaedics, Critical Care, Pain Team, Physiotherapy, Respiratory		
Evidence Base/ References:	East Midlands Major Trauma Network guidelines BOAST guidelines - 15		
Lead Division:	Surgery		
Lead Specialty:	General Surgery		
Lead Author:	Mr I Akhtar , Consultant in General Surgery		
Sponsor:	Surgery Division General Manager		
Name the documents here or record not applicable			
Associated Policy	Not Applicable		
Associated Guideline(s)	<ul style="list-style-type: none">Adult Chest Trauma Risk Stratification and Analgesia Guideline		
Associated Procedure(s)	Not Applicable		
Associated Standard Operating Procedure(s)	Not Applicable		
Other associated documents e.g. documentation/ forms	Not Applicable		
Consultation Undertaken:	<ul style="list-style-type: none">General Surgery ConsultantsGeneral Surgery Head of SurgeryConsultant Anaesthetist (IG)Authors – Adult Chest Trauma Risk Stratification and Analgesia GuidelineSurgery Division CG Group members		
Template control:	v1.5 November 2019		